



## **GENERAL** **RECYCLED ITEMS**

\*\*CAN BE DROPPED OFF @ ANYTIME - NO FEES APPLY\*\*

### **FIBER**

OFFICE PAPER, NEWSPAPER, MAGAZINES,  
CARDBOARD, ETC.



### **GLASS BOTTLES & JARS**

CLEAR & COLORED - CLEAN, LABELS CAN STAY ON



### **PLASTICS (#1, #2, #5 ONLY)**

#1 PET - \*BOTTLE FORM ONLY\*

#2 HDPE - MILK JUGS, DETERGENT JUGS, ETC.

#5 PP - COTTAGE CHEESE, YOGURT



### **METALS**

ALUMINUM: SODA/BEER CANS & FOILS

TIN & STEEL: FOOD CANS, POTS/PANS, PAINT &

AEROSOL CANS - \*MUST BE EMPTY\*



### **CARTONS & PAPER CUPS**

CARTONS: JUICE, WINE, BROTH, MILK, ICE CREAM

PAPER CUPS: COFFEE, SOFT DRINKS —

\*RINSED & WITHOUT LID/STRAW\*



## **ADDITIONAL** **RECYCLING SERVICES &** **INFORMATION**

### **STYROFOAM -**

I'M  
NEW HERE

### **NOW BEING RECYCLED!**

DROP-OFF'S NOW AVAILABLE AT HILLTOPPER'S  
RECYCLING CENTERS (ONA & ARCADIA) AND THE  
LA CROSSE COUNTY LANDFILL. NOT ACCEPTED

IN CURBSIDE PROGRAMS, AT THIS TIME.

#6 PS PACKAGING FOAM - FOOD SERVICE FOAM (TO-GO CONTAINERS, EGG CARTONS, CUPS)



**\*\*PLEASE, MATERIAL MUST BE CLEAN OF TAPE, STICKERS, GLUES, EXCESSIVE FOOD & DIRT\*\***  
**\*\*NO CONTRACTOR/INSULATION FOAM BOARD, PACKING PEANUTS OR FLEXIBLE FOAMS\*\***

### **BUSINESS OWNERS & CONTRACTORS**

\* SPECIALTY RECYCLED ITEMS (IE. BATTERIES &  
LIGHT BULBS) REQUIRE A FEE & PROPER PACK-  
AGING, LABELING, ETC. PRIOR TO BEING  
DROPPED OFF AT RECYCLING FACILITY.  
GUIDELINES FOR PROPER DISPOSAL OF RECY-  
CLED ITEMS AT HILLTOPPER'S RECYCLING  
CENTER ARE AVAILABLE. PLEASE COMMUNI-  
CATE WITH RECYCLING CENTER MANAGER  
AND/OR YOUR POINT OF CONTACT AT  
HILLTOPPER FOR EDUCATIONAL DOCUMENTS.

**\*\*IMPROPERLY PREPARED DROP-OFFS  
ARE SUBJECT TO ADDITIONAL FEES.\*\***



### **FACILITIES AFTER-HOURS**

IT IS **ILLEGAL** TO "DUMPSTER DIVE" AND DUMP  
MATERIAL AT HILLTOPPER'S FACILITIES AFTER-  
HOURS. FACILITIES ARE UNDER 24/7 VIDEO  
SURVEILLANCE.



**HILLTOPPER**  
REFUSE & RECYCLING  
SERVICE INC.

## **ONALASKA** **RECYCLING** **FACILITY**



# **2024** **RECYCLING** **&** **FACILITY** **INFORMATION**

**W6836 INDUSTRIAL BLVD,**

**ONALASKA, WI 54650**

**608-783-6727**

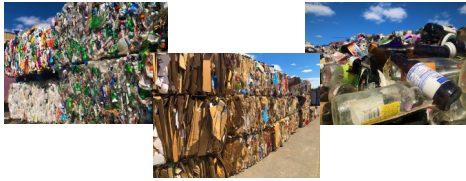
**[www.HilltopperRefuse.com](http://www.HilltopperRefuse.com)**

**@HilltopperRefuseRecycling**





HILLTOPPER REFUSE & RECYCLING SERVICE INC. - TRUST FAMILY OWNED AND OPERATED WASTE & RECYCLING MANAGEMENT COMPANY SINCE 1984.



## **ONALASKA RECYCLING CENTER**

**OPERATING HOURS** *\*SUBJECT TO CHANGE\**

- MON - FRI: 8:30AM - 4:30PM
- SATURDAY: 8:30AM - 11:30AM

**CLOSED**

- SUNDAY
- HOLIDAYS

### **2024 FACILITY CLOSURES**

- MONDAY, JAN 1
- MONDAY, MAY 27
- THURSDAY, JULY 4
- MONDAY, SEPTEMBER 2
- THURSDAY, NOVEMBER 28
- WEDNESDAY, DECEMBER 25



## **GENERAL TRASH & UNACCEPTABLES**

THE ITEMS LISTED BELOW CAN EITHER BE DROPPED OFF AT THE RECYCLING CENTER TO BE DISPOSED OF OR ARRANGED TO BE PICKED UP.

**\*\*FEES DO APPLY\*\***

### **GENERAL TRASH**

HOUSEHOLD GARBAGE



### **HOUSEHOLD FURNITURE**

COUCH, LOVESEAT, TABLES, CHAIRS, ETC.



### **CONSTRUCTION DEMOLITION**

CARPET, SHEETROCK, WOOD, SIDING, TILE, ETC.



**\*\*UNACCEPTABLE WASTE\*\***

≤150 LBS = \$15.00

≥150 LBS = \$15.00 + \$0.10/LB



## **HAZARDOUS & SPECIALTY ITEMS**

**\*\*FEES MAY APPLY TO RECYCLE\*\***

### **LIGHT BULBS**

STRAIGHT/COMPACT FLUORESCENTS, INCANDESCENTS, ULTRAVIOLET AND MORE



### **E-WASTE**

TELEVISIONS, MONITORS, LAPTOPS, COMPUTER TOWERS AND MORE



### **APPLIANCES**

MICROWAVES, FREON & NON-FREON, WASHERS/DRYERS AND MORE



### **BATTERIES**

LEAD ACID, LITHIUM, NICKEL - CADMIUM & MORE



### **MATTRESS & BOX SPRING**

